

Head Office:
Dixon Kelley Estate Agents
1 Penn Court
Station Road, West Moors
Dorset. BH22 0JJ

DORSET PARK HOMES

DRAFT

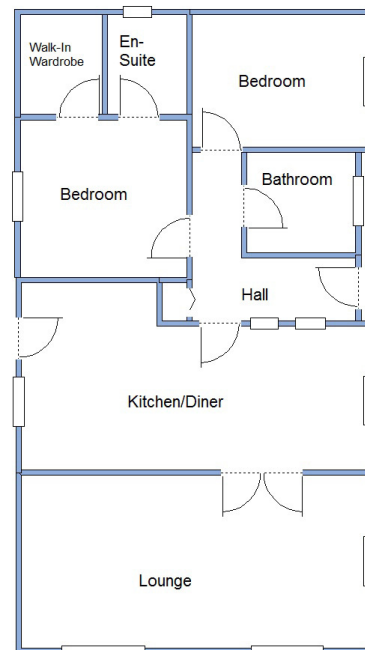
www.dorsetparkhomes.com

Telephone: 01202 877511

121 The Crescent, Oaktree Park, St Leonards, Ringwood. BH24 2RP



Spacious 22' Wide Park Home



This drawing has been prepared for diagrammatic purpose only. Not to scale.

2-Bedroom Park Home - approx 40' x 22'

Accommodation & approximate room dimensions:

- Prestige 'Residence' Park Home circa 2017
- Hall: Linen cupboard. Hatch to roof space.
- Kitchen/Diner: approx 21'2" x 11'5" max. Range of floor & wall cupboards. Built-in oven, hob & hood. Integrated fridge/freezer, dishwasher & washing machine. Cupboard housing combination gas boiler. Ample space for Dining Suite. Vaulted ceiling & Double doors to:
- Lounge: approx 21'2" x 10'7". Feature fireplace. Vaulted ceiling with LED spot lights.
- Bedroom 1: approx 10'2" x 9'8". Walk-in wardrobe.
- En-Suite Shower Room
- Bedroom 2: approx 10'2" x 8'5". Built-in wardrobes.
- Bathroom: Panelled bath with shower over & glass screen fitted. Vanity wash basin & WC.
- Gas Central Heating (system untested)
- PVCu Double-Glazing
- Patio Garden with large Shed.
- Excellent Parking on Plot
- Age Restriction 50+ Pets Considered
- Popular Residential Park with active Members Club.

Popular 'Pet Friendly' Park



Price: £230,000

Pitch Fee: approx £238.65 per month

Subject to Annual Review

Council Tax Band: 'A'

Tenure: 1983 Mobile Homes Act Agreement

VIEWING STRICTLY BY APPOINTMENT WITH THE VENDOR'S AGENT Dorset Park Homes 01202 877511

IMPORTANT NOTE: These particulars are believed to be correct but their accuracy is not guaranteed. They do not form part of any contract. Nothing in these particulars shall be deemed to be a statement that the property is in good structural condition or otherwise, nor that any of the services, appliances, equipment or facilities are in good working order or have been tested. Purchasers should satisfy themselves on such matters prior to purchase Ref.W04837

The recommended specialist in Park Home sales
Partner: Simon Dixon

